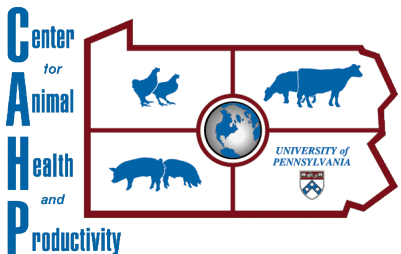


# Creating Reports From UPenn Dairy Ration Analyzer

James D. Ferguson, Neal Thomsen, David Galligan,  
Zhiguo Wu, Linda Baker, Joseph Bender  
New Bolton Center  
University of Pennsylvania  
School of Veterinary Medicine



**UPenn Dairy Ration Analyzer**  
University of Pennsylvania





Clicking on the “Tablet” Icon  
Or the “Reports” tab opens  
The “Reports” box

Group settings

Feedbank

Ration

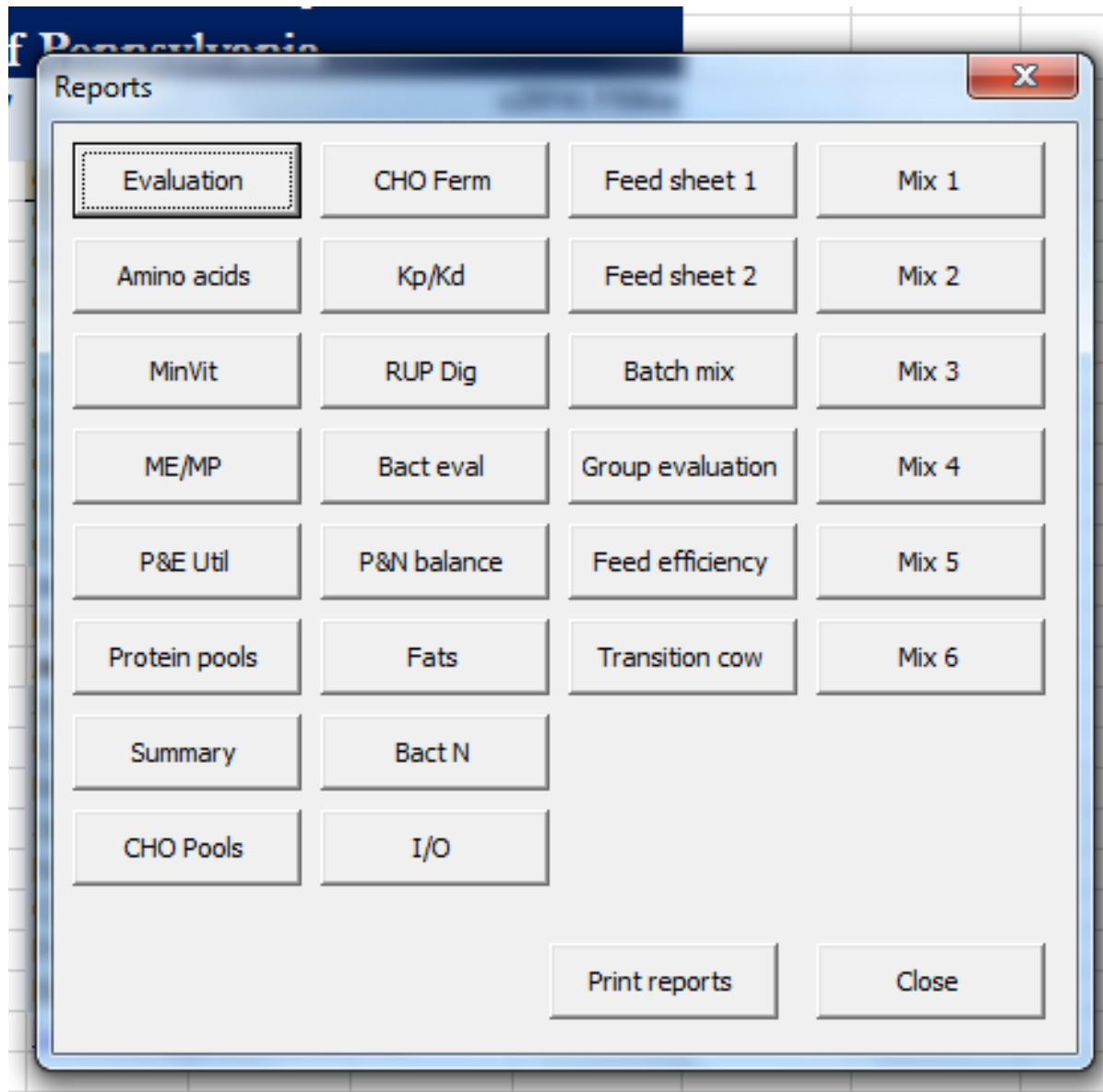
Formulate  
ration

Reports

Reports

Evaluation	CHO Ferm	Feed sheet 1	Mix 1
Amino acids	Kp/Kd	Feed sheet 2	Mix 2
MinVit	RUP Dig	Batch mix	Mix 3
ME/MP	Bact eval	Group evaluation	Mix 4
P&E Util	P&N balance	Feed efficiency	Mix 5
Protein pools	Fats	Transition cow	Mix 6
Summary	Bact N		
CHO Pools	I/O		

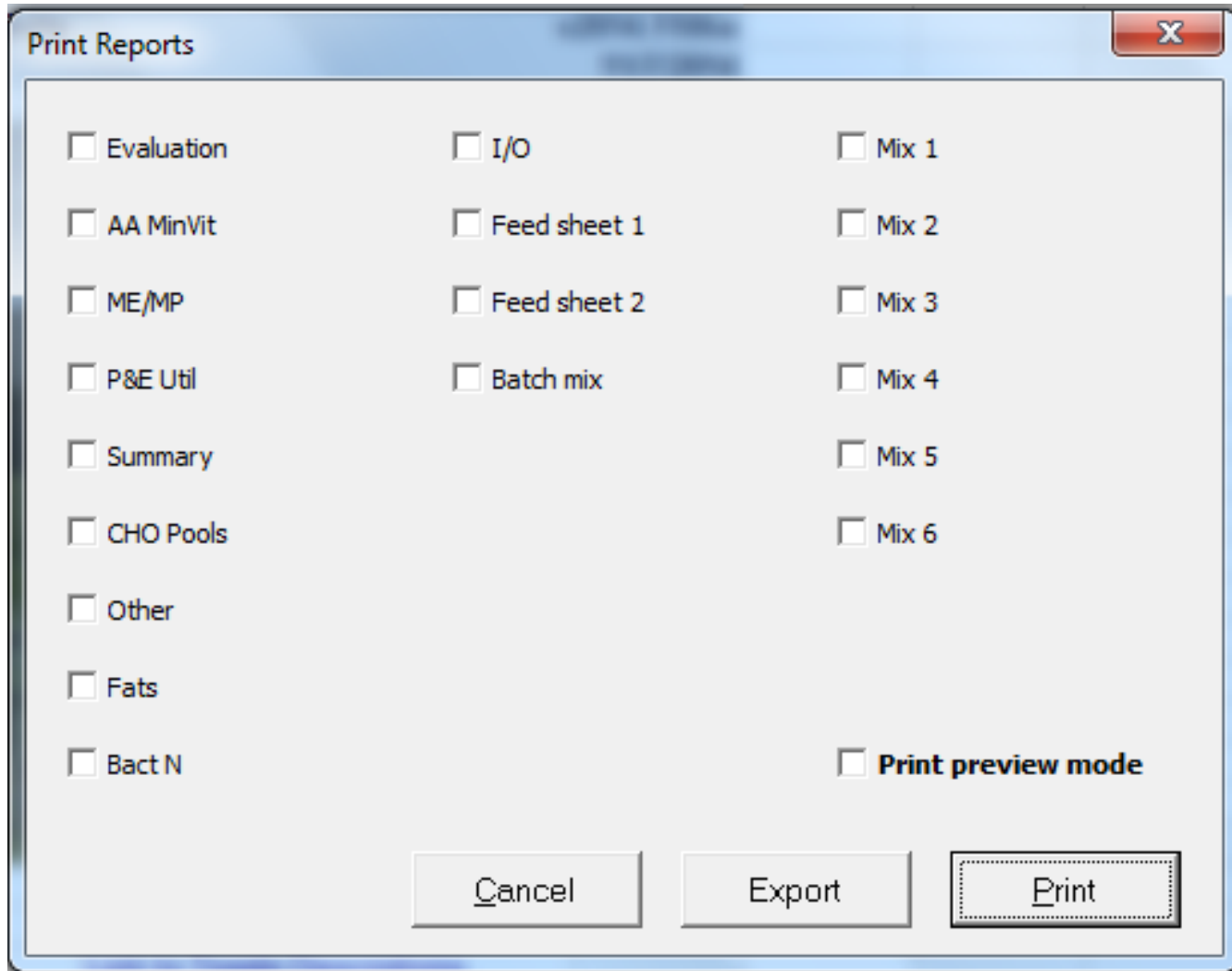
Print reports      Close



Clicking a Button in the Reports Box takes you to a Report page

Many of the Reports are what one finds in CPMDairy With some new ones

To create an output report select the "Print Reports" button



Clicking on the "Print" tab in the Report Box Opens this box

This allows you to select reports to print or To export

Print preview mode allows previewing reports Prior to printing

