

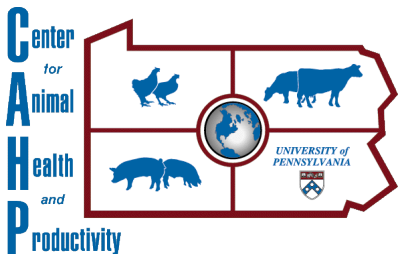
# Setting Excel for UPENN Ration Analyzer

James D. Ferguson, Neal Thomsen, David Galligan,  
Zhiguo Wu, Linda Baker, Joseph Bender

New Bolton Center


University of Pennsylvania

School of Veterinary Medicine



UPenn Dairy Ration Analyzer  
University of Pennsylvania

Group settings Center for Animal Health and Productivity v2014.1105a  
11/5/2014

Feedbank		Ctrl+Shift+H Return to this page
Ration		Ctrl+Shift+P Peptide toggle
Formulate ration		Ctrl+Shift+L Liquid passage toggle
Reports		Ctrl+Shift+R Evaluation report
Ask Spot		Ctrl+Shift+S Hide/Show sheets
		Ctrl+Shift+E Enzyme toggle
		Ctrl+Shift+T Toggle Linear
		Ctrl+Shift+N Toggle ProtB3 Rate
		Ctrl+Shift+C Toggle Calc B3 Rate
		Ctrl+Shift+O Goto constraints

BETA BETA BETA BETA

Based on CPM 3.0.8.1

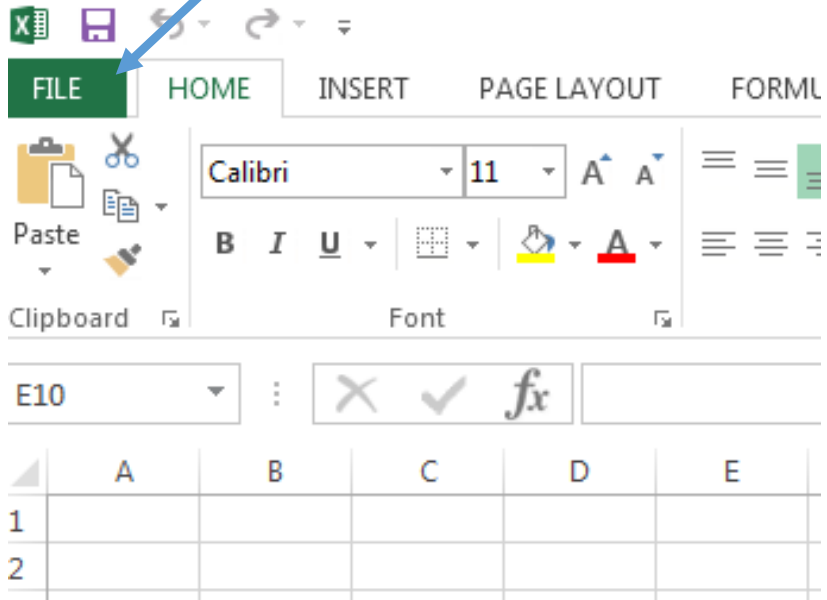
**Model is using:**

- Std. liquid passage rate
- Using peptide submodel
- NFC value used
- Sheets visible
- No enzyme
- CPM Method NonLinear
- ProtB3 Rate
- Reported B3 Rate
- Link to Table Descriptions

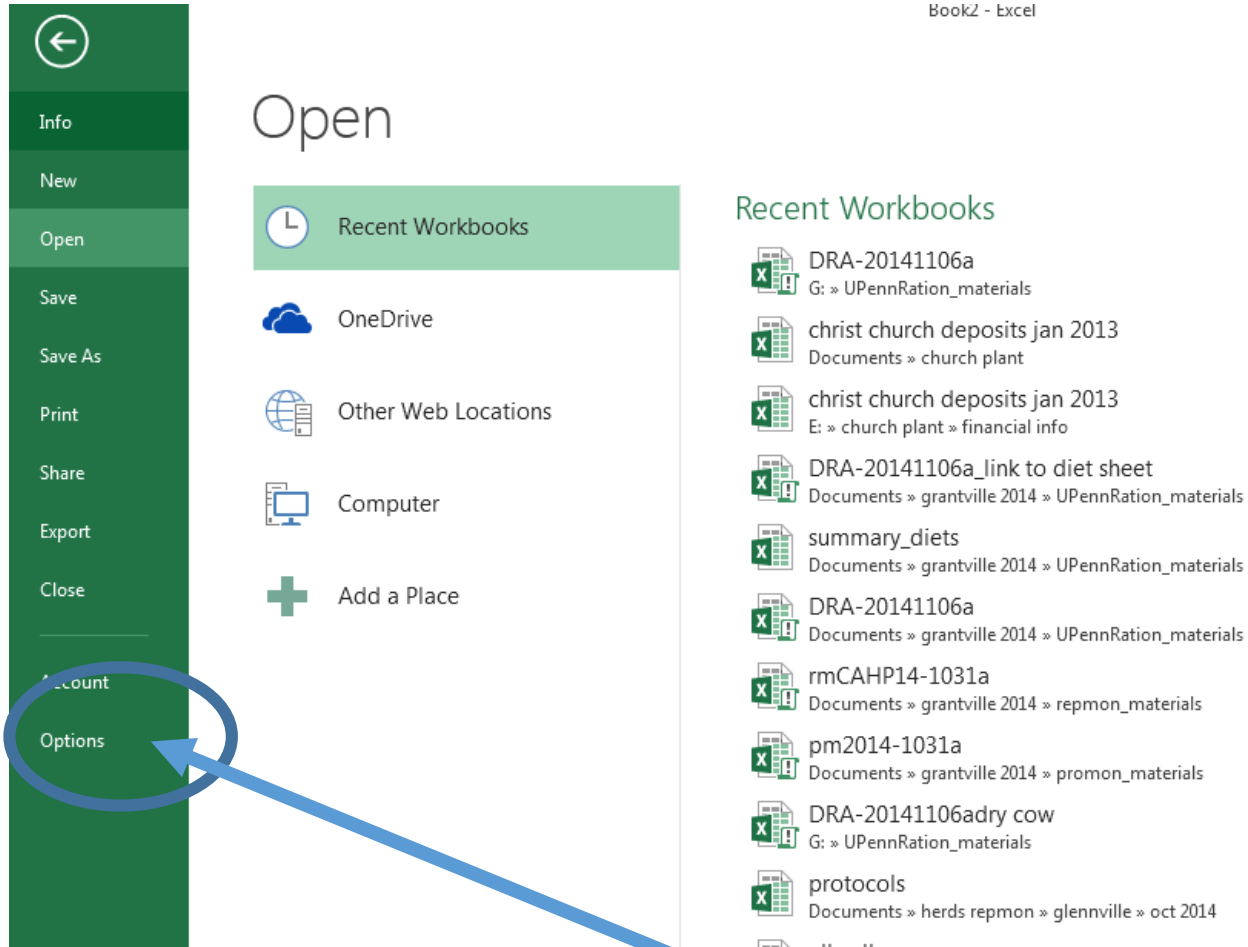


# Extremely Important

- Before opening the UPENN Ration Analyzer in Excel you need to be sure that Excel is configured to run the Macros and the Solver
- Open your Excel 2010 or 2013

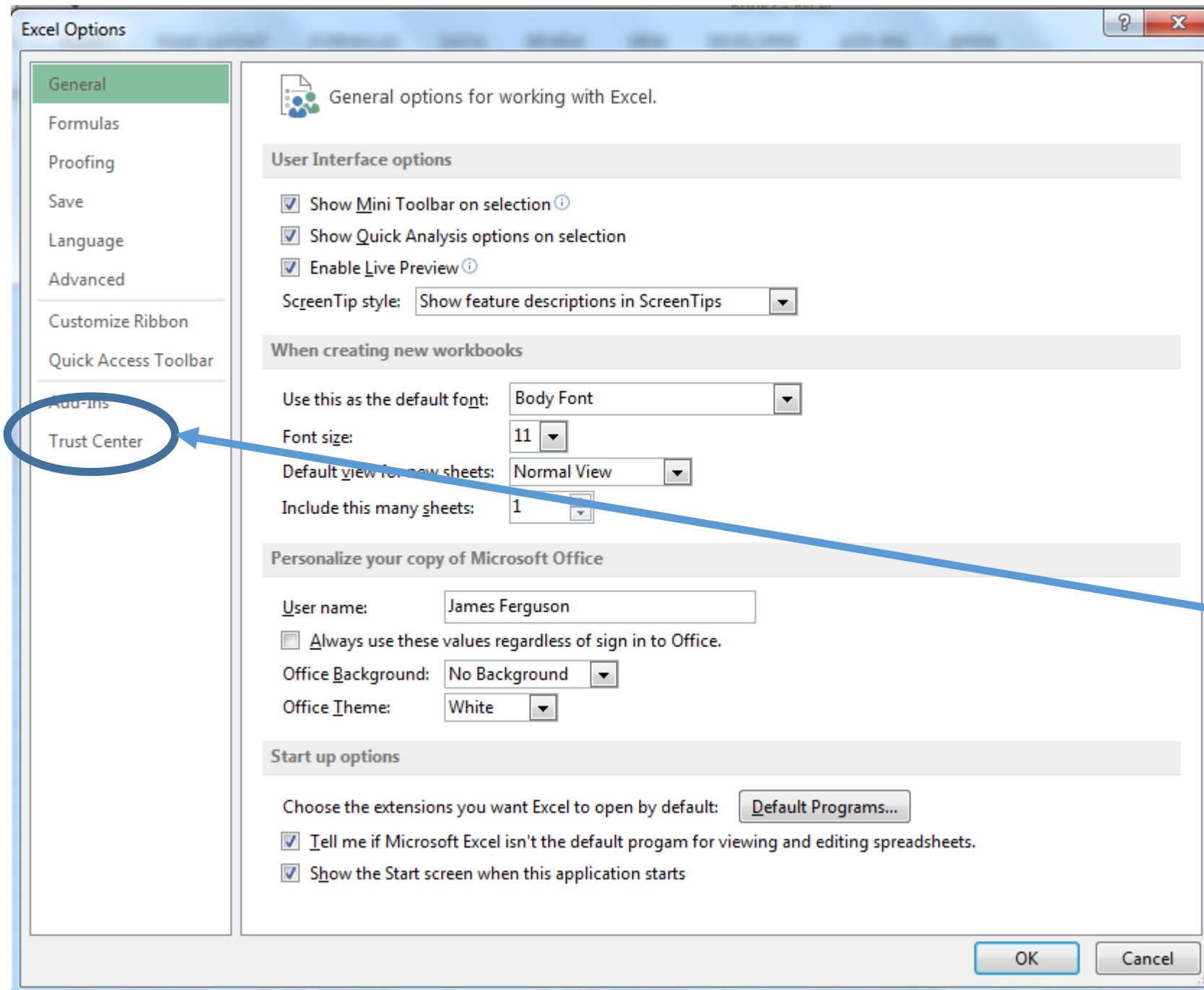


You have opened the Excel program  
This screen is starring at you  
Highlight the “FILE” item and click to open it



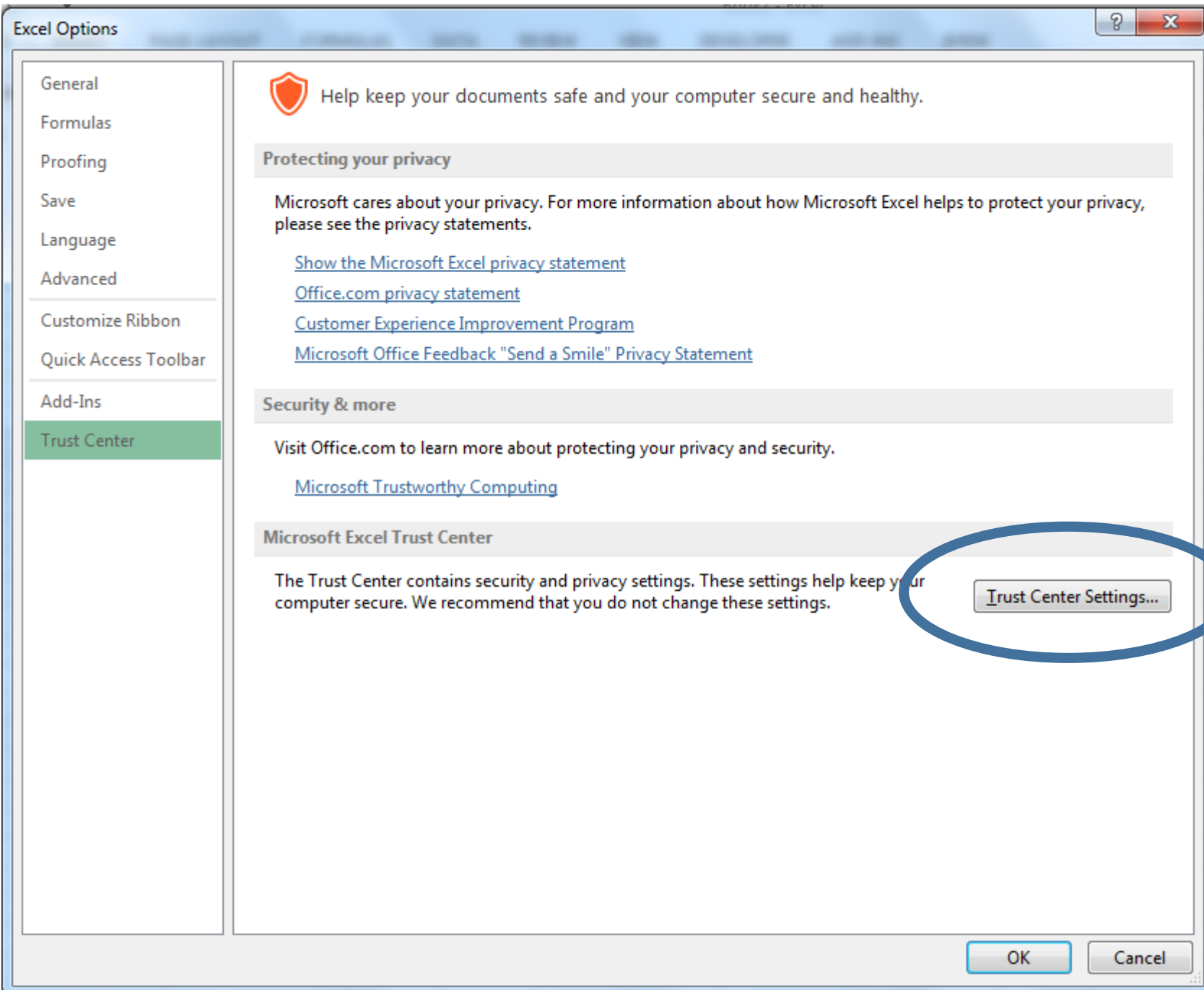
Clicking on the “FILE” menu item opens this screen

You want to chose the “Options” item



Clicking your mouse on the “Options” item opens this Box

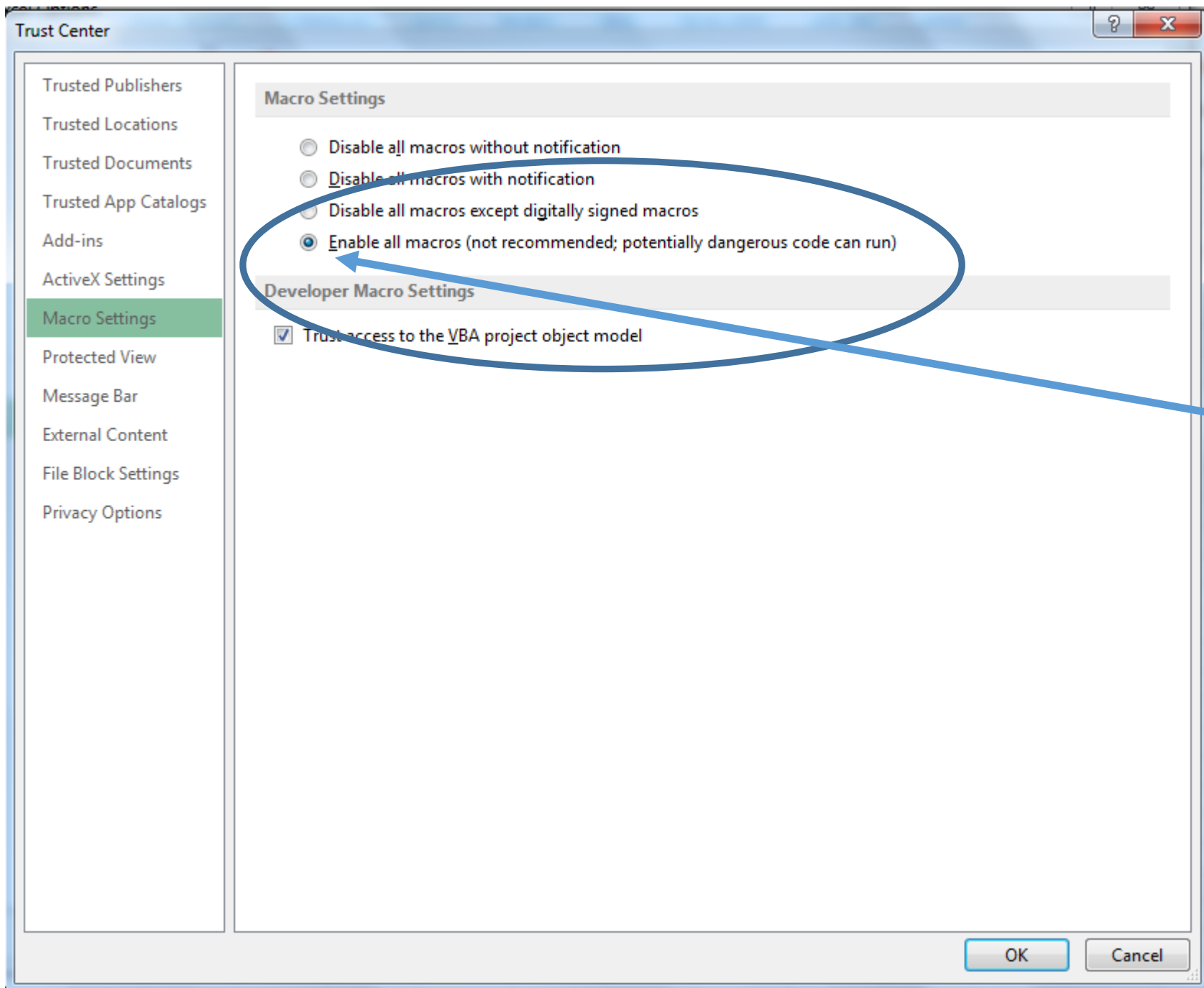
You want to choose the “Trust Center”



Clicking on "Trust Center"  
Opens this box

You want to select the button

"Trust Center Settings"

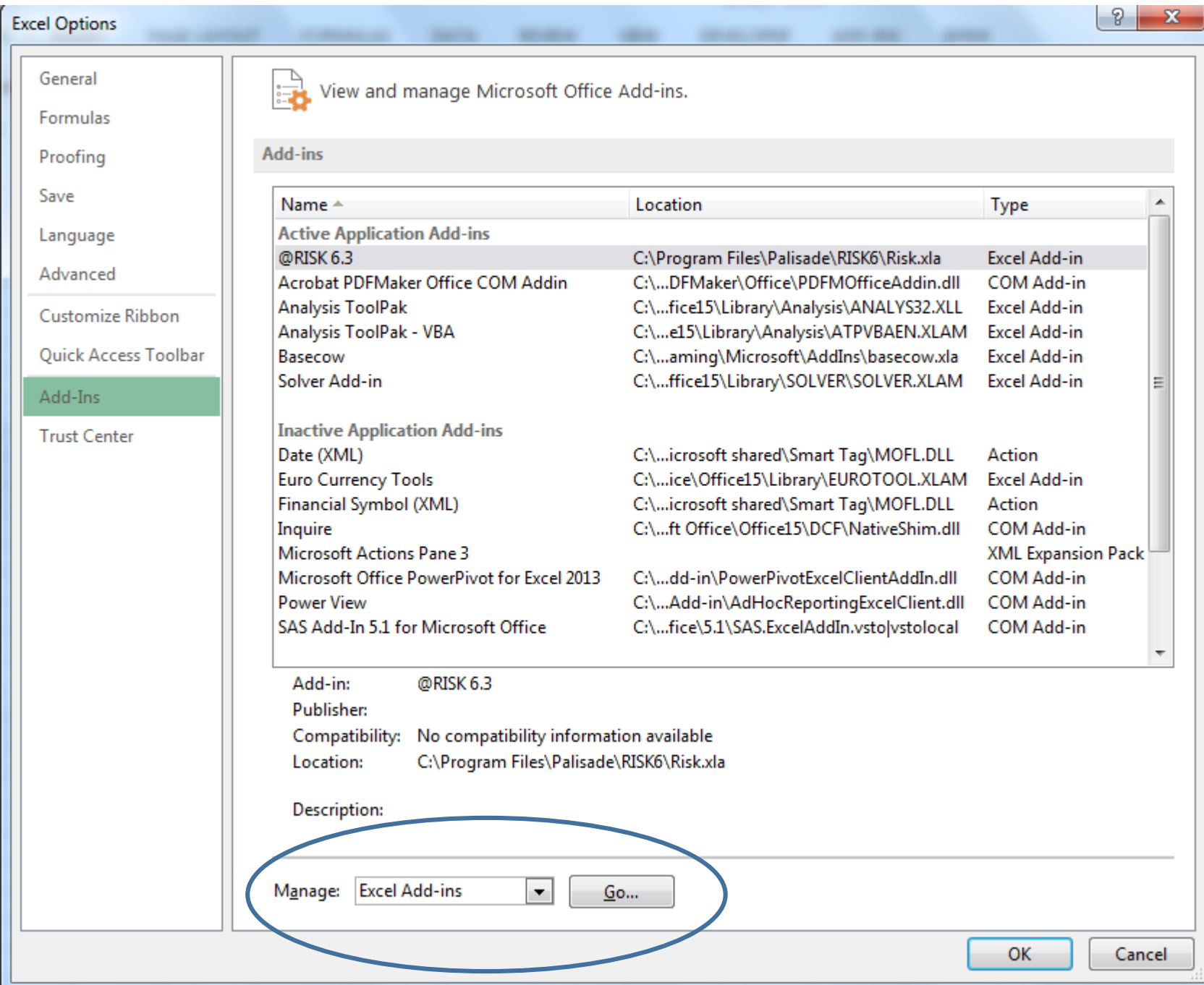


Clicking on “Trust Center Settings”

Opens this box and you want to select the item “Macro Settings” With your mouse  
This gives a list of Macro Settings On the right and you want to “Enable all macros...”

And then click “OK”

Clicking “OK” from the Macro Settings Takes you back to the “Excel Options” menu  
(Next Slide)

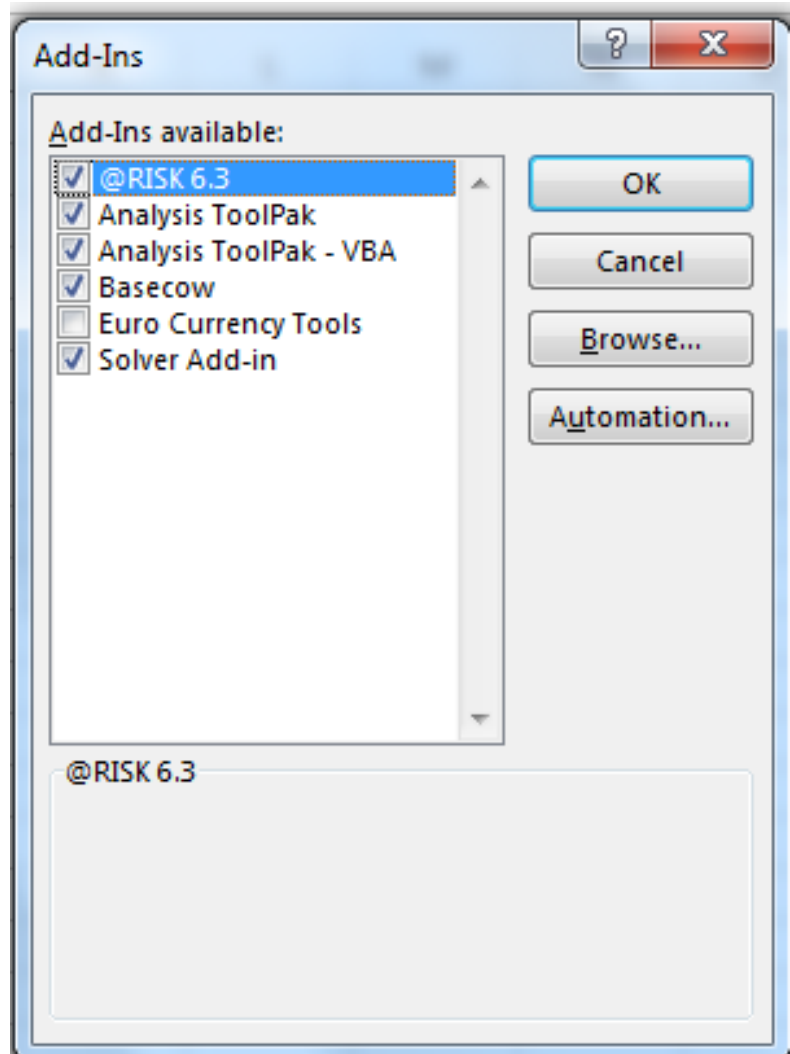


Highlight the “Add Ins” by pointing and clicking on it with your mouse

You want to Mange “Excel Add-ins” Which appears in a drop down window

Click on “Go” button



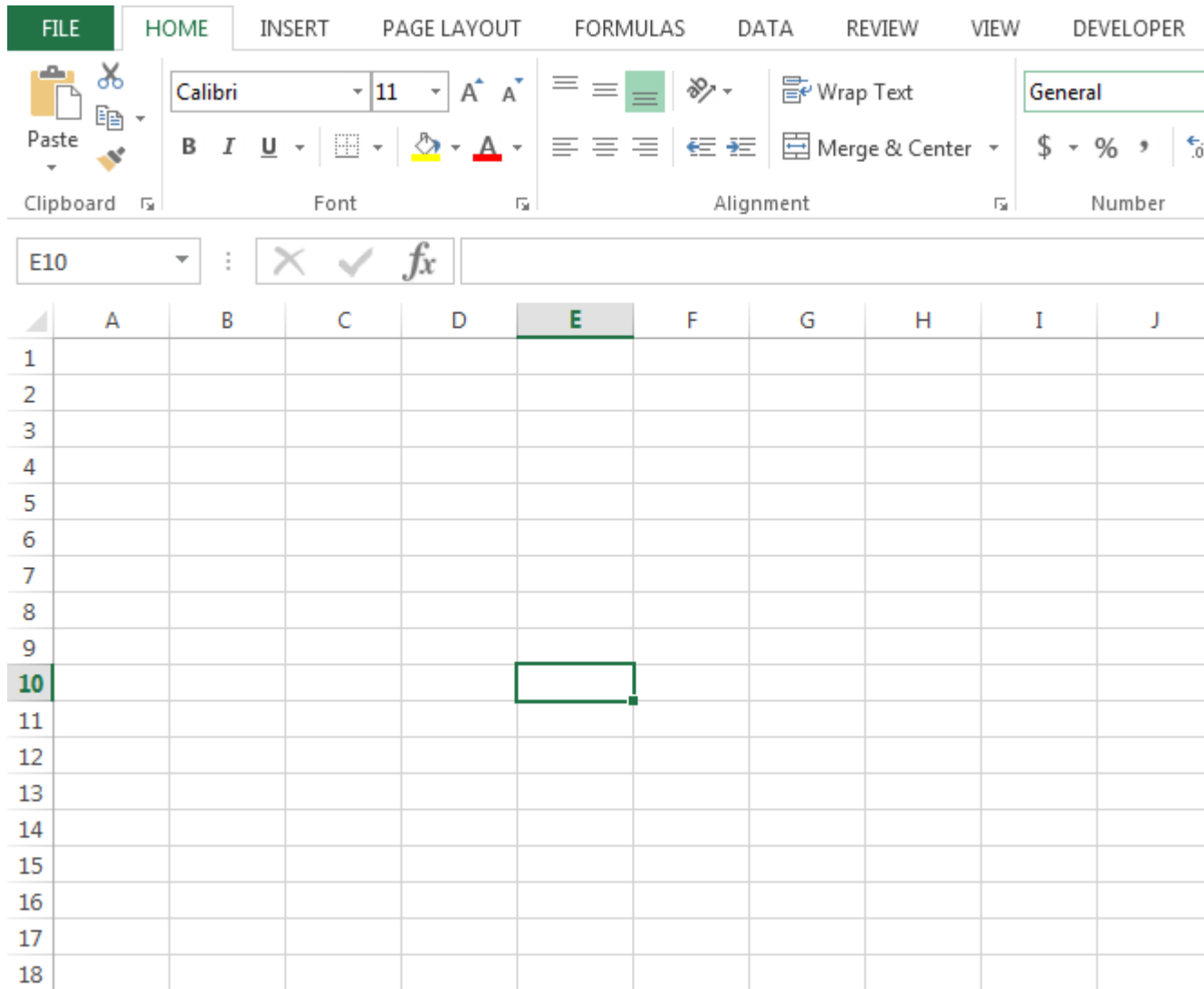


Clicking on “Go” button opens this box

Click on “Solver Add-in”  
“Analysis ToolPak”  
“Analysis ToolPak – VBA”

Note – you don’t have @Risk 6.3 or Basecow  
those are my Add-ins

Click “OK”



That takes you back to the Excel sheet and  
You are ready to open the program




Click on “File”  
And then you want to OPEN the program

You may need to browse to find the directory  
It is in



On opening the program  
You will see this sheet

K20 :

	A	B	C	D	E	F	G	H	I	J
1	<b>UPenn Dairy Ration Analyzer</b>									
2	<b>University of Pennsylvania</b>									
3	<b>Group settings</b>	Center for Animal Health and Productivity							v2014.1106a	
4									11/17/2014	
5					<b>Ctrl+Shift+H</b>		<b>Return to this page</b>			
6					Ctrl+Shift+P		Peptide toggle			
7	Ctrl+Shift+L				Liquid passage toggle					
8	Ctrl+Shift+R				Evaluation report					
9	Ctrl+Shift+S				Hide/Show sheets					
10	Ctrl+Shift+E				Enzyme toggle					
11	Ctrl+Shift+T				Toggle Linear					
12	<b>Formulate ration</b>			Ctrl+Shift+N		Toggle ProtB3 Rate				
13				Ctrl+Shift+C		Toggle Calc B3 Rate				
14				Ctrl+Shift+O		Goto constraints				
15						<b>BETA</b>		<b>BETA</b>		<b>BETA</b>
16	<b>Reports</b>			Based on CPM 3.0.8.1						
17				<b>Model is using:</b>						
18				Std. liquid passage rate						
19				Using peptide submodel						
20				NFC value used						
21				Sheets visible						
22				No enzyme						
23				CPM Method NonLinear						
24	 <b>Ask Spot</b>			ProtB3 Rate						
25				Reported B3 Rate						
26				<a href="#">Link to Toggle Descriptions</a>						
27										
28	<b>University of Pennsylvania</b>									